

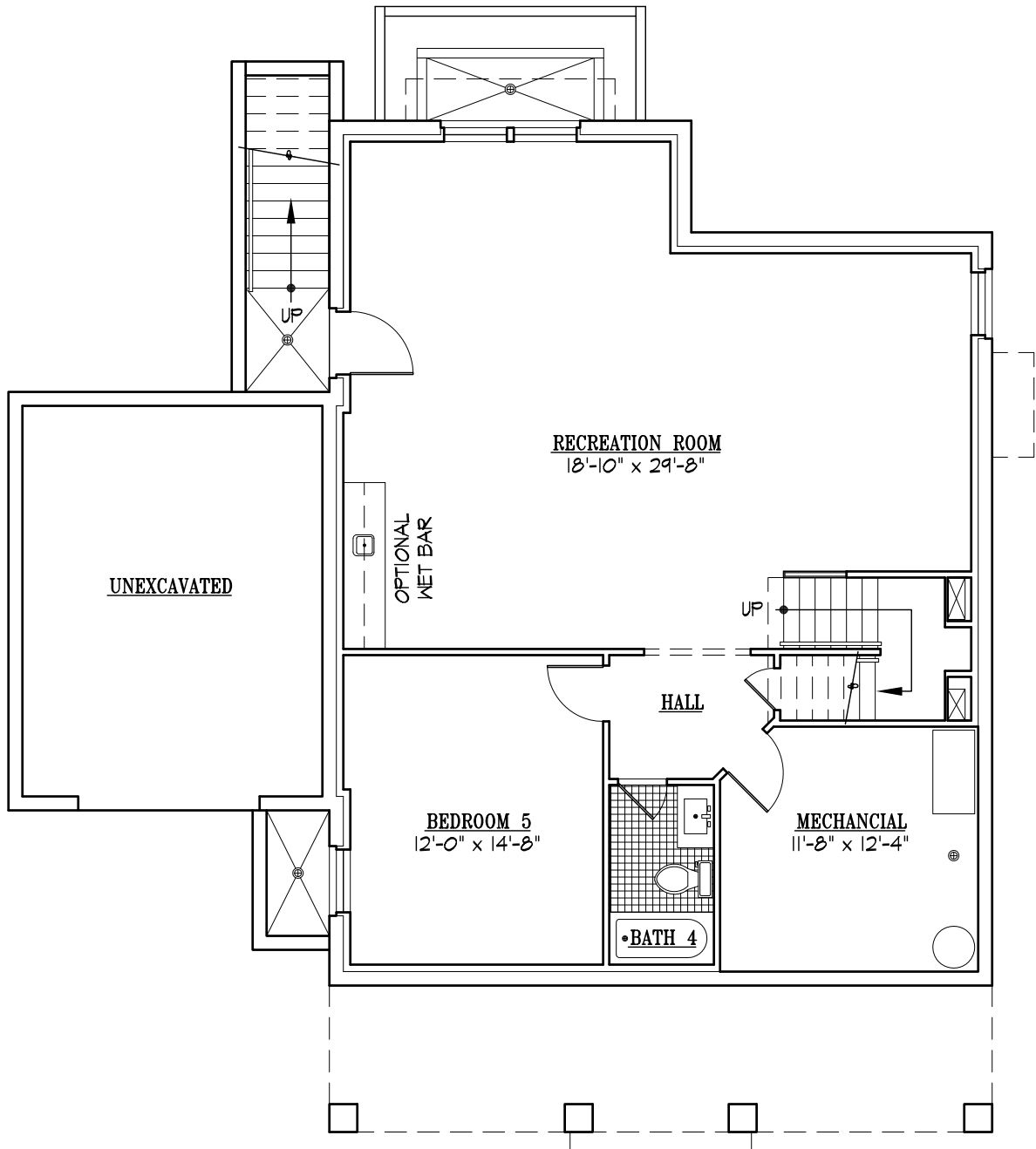


CELEBRITY / GREENBUILT HOMES - FRONT ELEVATION

200 VIRGINIA AVENUE FALLS CHURCH, VA 22046

LIVABLE SQUARE FEET = 3,756 SQUARE FEET

THIS BROCHURE IS FOR ILLUSTRATIVE PURPOSES ONLY AND NOT PART OF A LEGAL CONTRACT. THE BUILDER RESERVES THE RIGHT TO MAKE CHANGES, WITHOUT NOTICE OR OBLIGATION. 2018 © KULINSKI GROUP ARCHITECTS, P.C. EXPRESSLY RESERVES ITS COMMON LAW AND OTHER PROPERTY RIGHTS IN THESE PLANS. THESE PLANS ARE NOT TO BE REPRODUCED, CHANGED, OR COPIED IN ANY FORM OR MANNER WHATSOEVER, NOR ARE THEY TO BE ASSIGNED TO ANY THIRD PARTY, WITHOUT FIRST OBTAINING THE EXPRESS WRITTEN PERMISSION AND CONSENT OF KULINSKI GROUP ARCHITECTS, P.C.

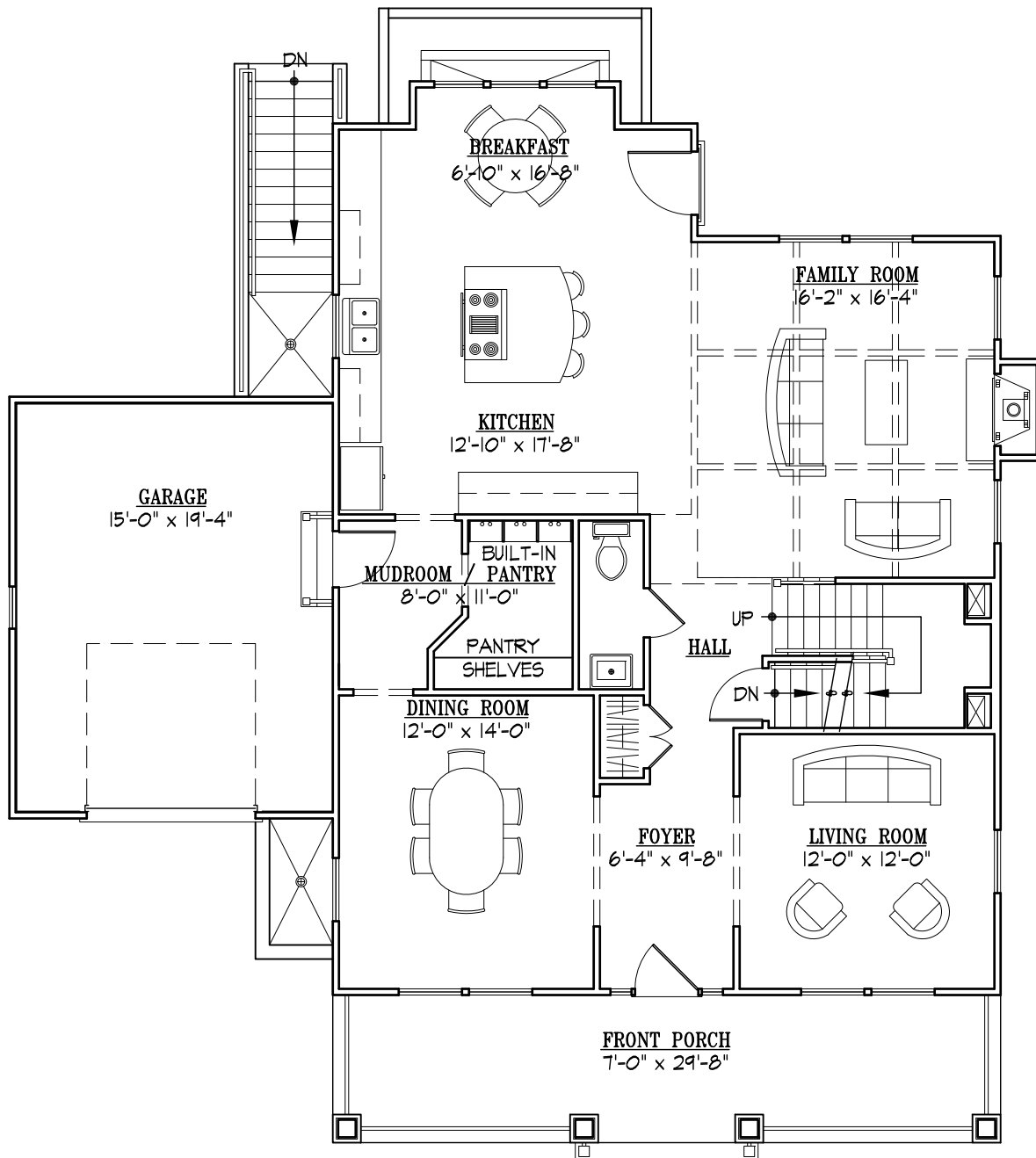


CELEBRITY / GREENBUILT HOMES - BASEMENT PLAN

200 VIRGINIA AVENUE FALLS CHURCH, VA 22046

LIVABLE SQUARE FEET = 1,232 SQUARE FEET

THIS BROCHURE IS FOR ILLUSTRATIVE PURPOSES ONLY AND NOT PART OF A LEGAL CONTRACT, THE BUILDER RESERVES THE RIGHT TO MAKE CHANGES, WITHOUT NOTICE OR OBLIGATION. 2018 © KULINSKI GROUP ARCHITECTS, P.C. EXPRESSLY RESERVES ITS COMMON LAW AND OTHER PROPERTY RIGHTS IN THESE PLANS. THESE PLANS ARE NOT TO BE REPRODUCED, CHANGED, OR COPIED IN ANY FORM OR MANNER WHATSOEVER, NOR ARE THEY TO BE ASSIGNED TO ANY THIRD PARTY, WITHOUT FIRST OBTAINING THE EXPRESS WRITTEN PERMISSION AND CONSENT OF KULINSKI GROUP ARCHITECTS, P.C.

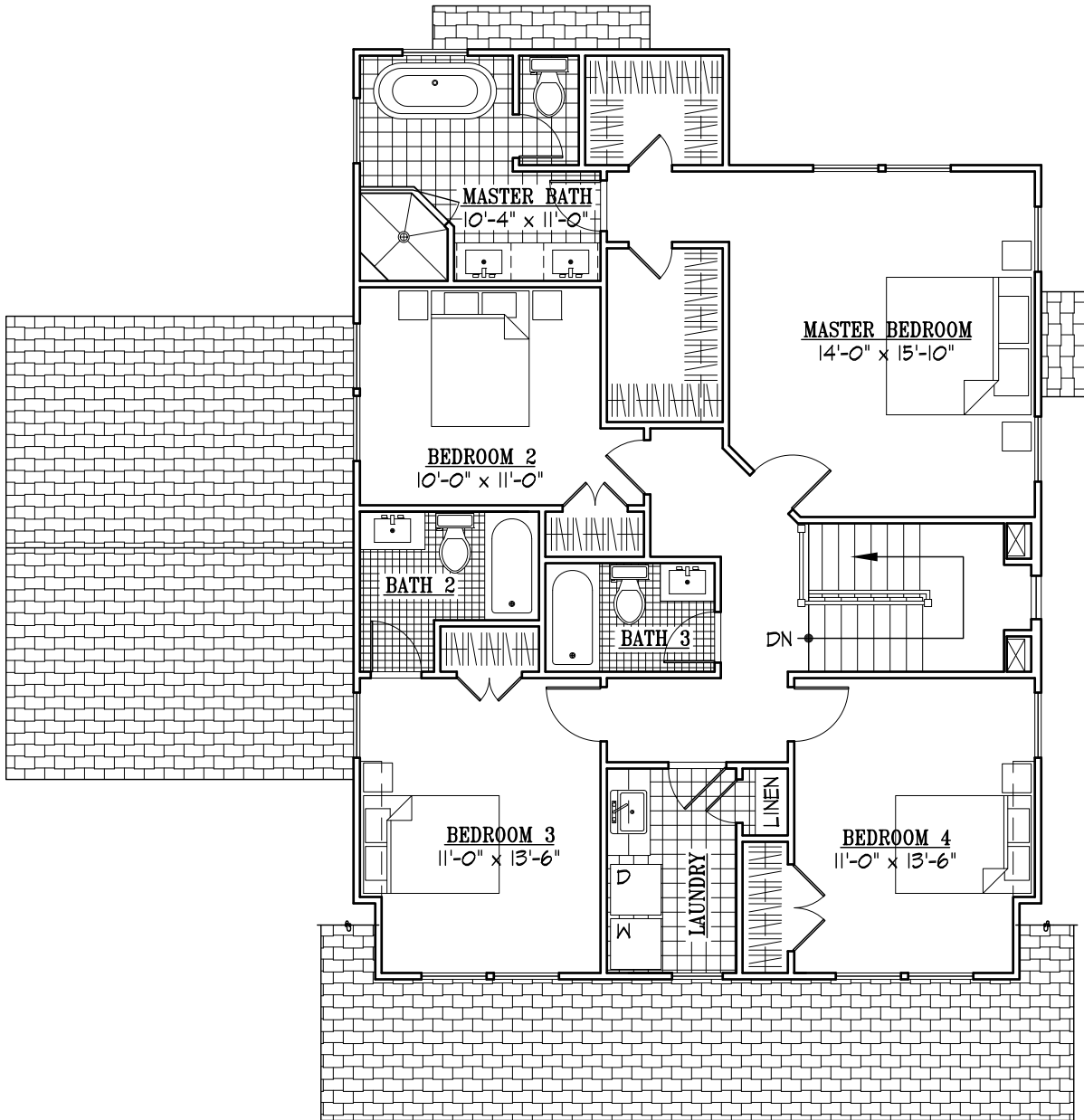


CELEBRITY / GREENBUILT HOMES - FIRST FLOOR

200 VIRGINIA AVENUE FALLS CHURCH, VA 22046

LIVABLE SQUARE FEET = 1,252 SQUARE FEET

THIS BROCHURE IS FOR ILLUSTRATIVE PURPOSES ONLY AND NOT PART OF A LEGAL CONTRACT, THE BUILDER RESERVES THE RIGHT TO MAKE CHANGES, WITHOUT NOTICE OR OBLIGATION. 2018 © KULINSKI GROUP ARCHITECTS, P.C. EXPRESSLY RESERVES ITS COMMON LAW AND OTHER PROPERTY RIGHTS IN THESE PLANS. THESE PLANS ARE NOT TO BE REPRODUCED, CHANGED, OR COPIED IN ANY FORM OR MANNER WHATSOEVER, NOR ARE THEY TO BE ASSIGNED TO ANY THIRD PARTY, WITHOUT FIRST OBTAINING THE EXPRESS WRITTEN PERMISSION AND CONSENT OF KULINSKI GROUP ARCHITECTS, P.C.



CELEBRITY / GREENBUILT HOMES - SECOND FLOOR

200 VIRGINIA AVENUE FALLS CHURCH, VA 22046

LIVABLE SQUARE FEET = 1,272 SQUARE FEET

THIS BROCHURE IS FOR ILLUSTRATIVE PURPOSES ONLY AND NOT PART OF A LEGAL CONTRACT, THE BUILDER RESERVES THE RIGHT TO MAKE CHANGES, WITHOUT NOTICE OR OBLIGATION. 2018 © KULINSKI GROUP ARCHITECTS, P.C. EXPRESSLY RESERVES ITS COMMON LAW AND OTHER PROPERTY RIGHTS IN THESE PLANS. THESE PLANS ARE NOT TO BE REPRODUCED, CHANGED, OR COPIED IN ANY FORM OR MATTER WHATSOEVER, NOR ARE THEY TO BE ASSIGNED TO ANY THIRD PARTY, WITHOUT FIRST OBTAINING THE EXPRESS WRITTEN PERMISSION AND CONSENT OF KULINSKI GROUP ARCHITECTS, P.C.